

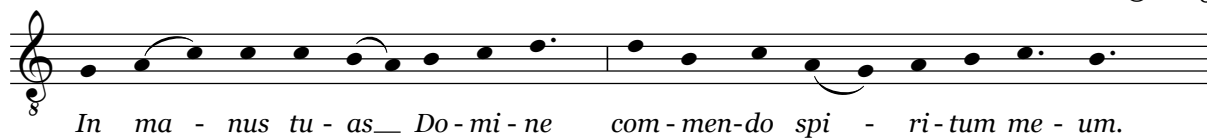
# In manus tuas

attrib. Tomás Luis de Victoria

(1548-1611)

ed. Edward Tambling

© 2013



Score for five voices: Cantus [Soprano], Altus [Alto], Tenor I [Tenor I], Tenor II [Tenor II], and Bassus [Bass]. The music is in common time (C) and features a key signature of one flat (B-flat). The lyrics are: In ma - nus tu - as Do - mi - ne, in ma - nus tu - as Do - mi - ne.

Continuation of the score for five voices. The lyrics are: Do - mi - ne, in ma - nus tu - as Do - mi - ne. The music is in common time (C) and features a key signature of one flat (B-flat). The lyrics are: Do - mi - ne, in ma - nus tu - as Do - mi - ne.

13

com - men - do spi - ri - tum me - um.

- do spi - ri - tum me - um, spi - ri-tum me - um.

tum me - um, com - men - do spi - ri-tum me - um.

do spi - ri - tum me - um.

com - men - do spi - ri - tum me - um.

Re - de - mi - sti nos Do - mi - ne De - us ve - ri - ta - tis.

